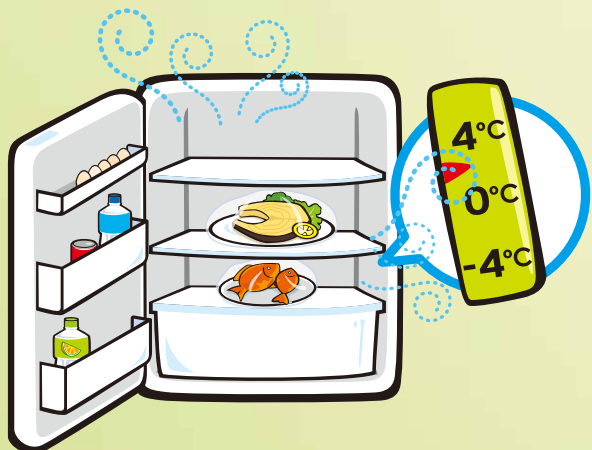


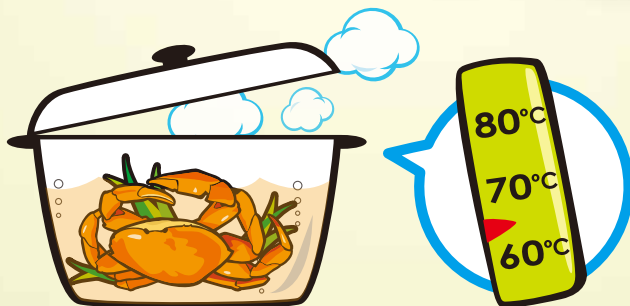
食品貯存及展示

Food Storage and Display
Acondicionamento e Exposição de Alimentos



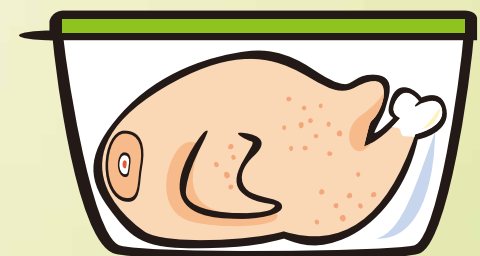
冷食冷存 (<5°C)

Manter os alimentos frios (inferior a 5°C)
Keep cold food below 5°C



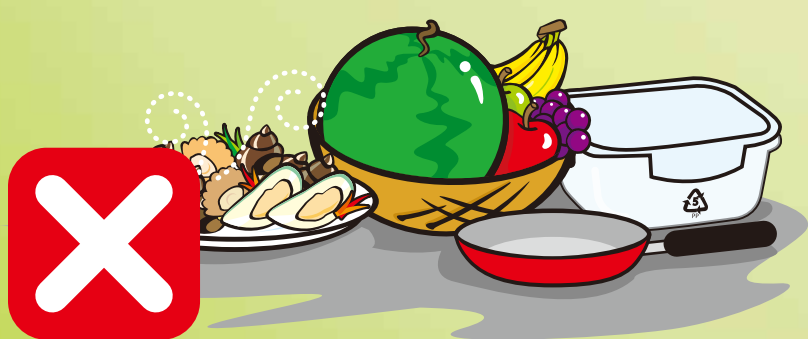
熱食熱存 (>60°C)

Manter os alimentos quentes (superior a 60°C)
Keep hot food above 60°C



食品應時常蓋好

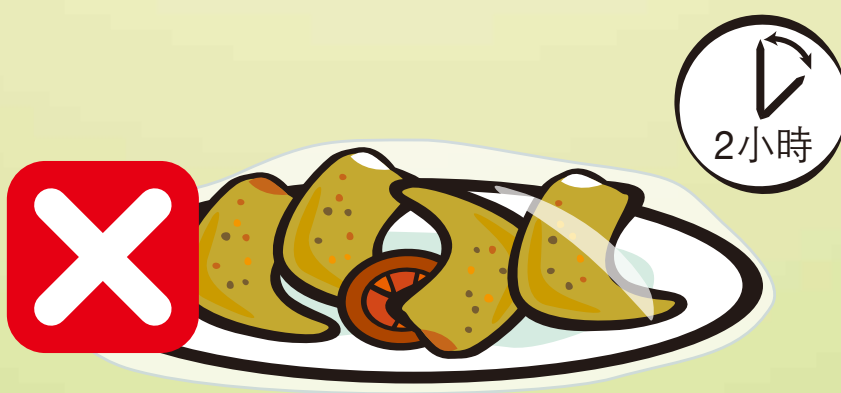
Os alimentos devem ser adequadamente cobertos
Food should be covered properly



食品、設備及用具應離地存放

Retirar do chão todos os alimentos, equipamentos e utensílios

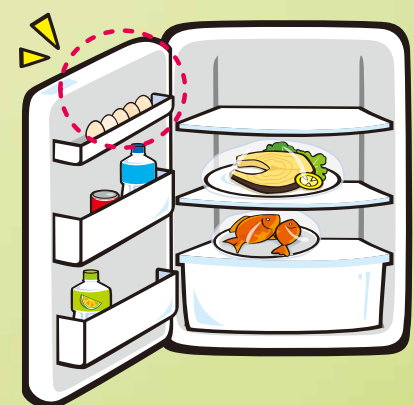
Food, equipment and utensils should be placed off the floor



即食食品不應在室溫展示>2小時

Os alimentos prontos para consumo não devem ser expostos à temperatura do ambiente >2 horas

Avoid keeping ready-to-eat food at room temperature >2 hours



以「先入先出」原則使用食材

Seguir o princípio "Primeiro a entrar, primeiro a sair (PEPS)"

Follow first-in-first-out (FIFO) principle

此海報只可在民政總署核准的地方張貼和擺放
Este cartaz só pode ser afixado e colocado nos locais autorizados pelo IACM para o efeito